

Mississippi

225 Agents

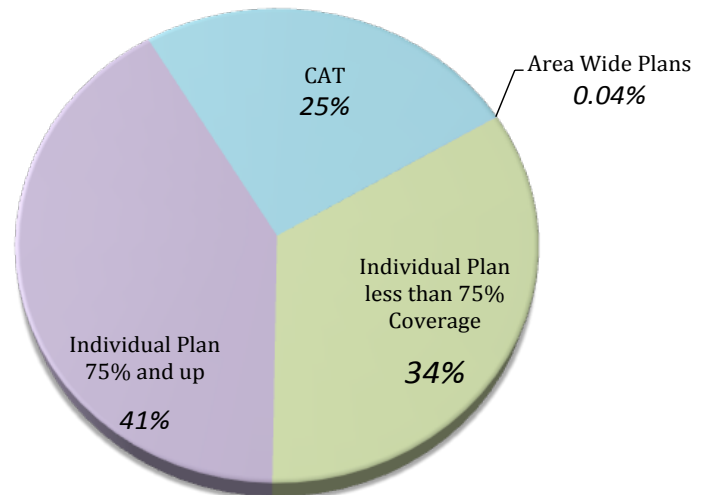


Crop Insurance

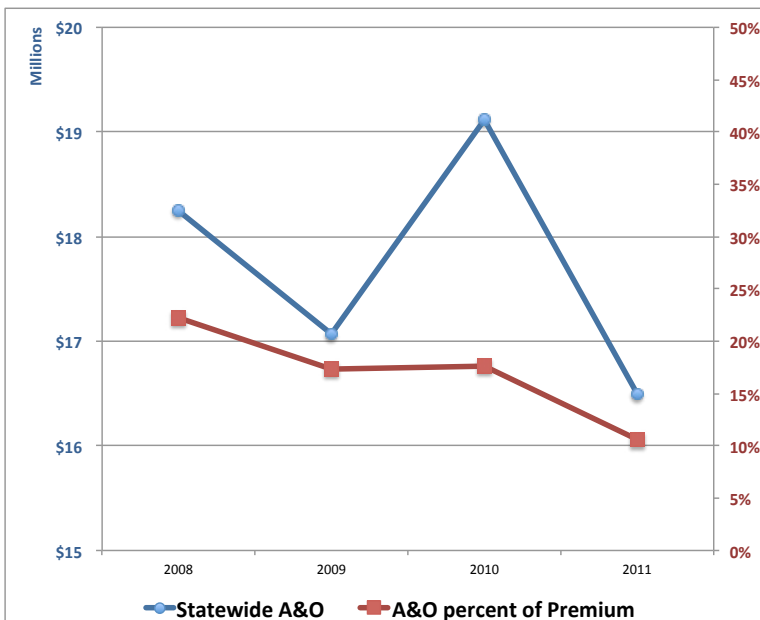
Year	Net Acres Insured	Producer Premiums	Liabilities	Indemnities	A&O Costs
2008	3.5 m	\$27 m	\$731 m	\$62 m	\$18 m
2009	3.4 m	\$28 m	\$808 m	\$123 m	\$17 m
2010	3.5 m	\$32 m	\$956 m	\$100 m	\$19 m
2011	3.6 m	\$43 m	\$1,361 m	\$151 m	\$16 m

Of the 6.6 million acres planted in Mississippi in 2011, 3.6 million or 55% were enrolled in crop insurance. Of the insured acreage, 2.7 million were individual buy-up coverage, with 1.5 million (41% of acres; 62% of premiums) with a buy-up level of 75% or greater. Over 885,000 (25%) were in CAT and only 1,322 (.04%) were in area wide plans like GRP or GRIP.

Insurance Policies by Net Acres Insured



Administrative and Operating Costs



The chart to the left highlights how the cost to the government to administer crop insurance in the state has been drastically cut since 2008, even as total liability within Mississippi has increased (from \$956 million in 2010 to \$1.4 billion in 2011).

Crop Insurance
Professionals
Association

